

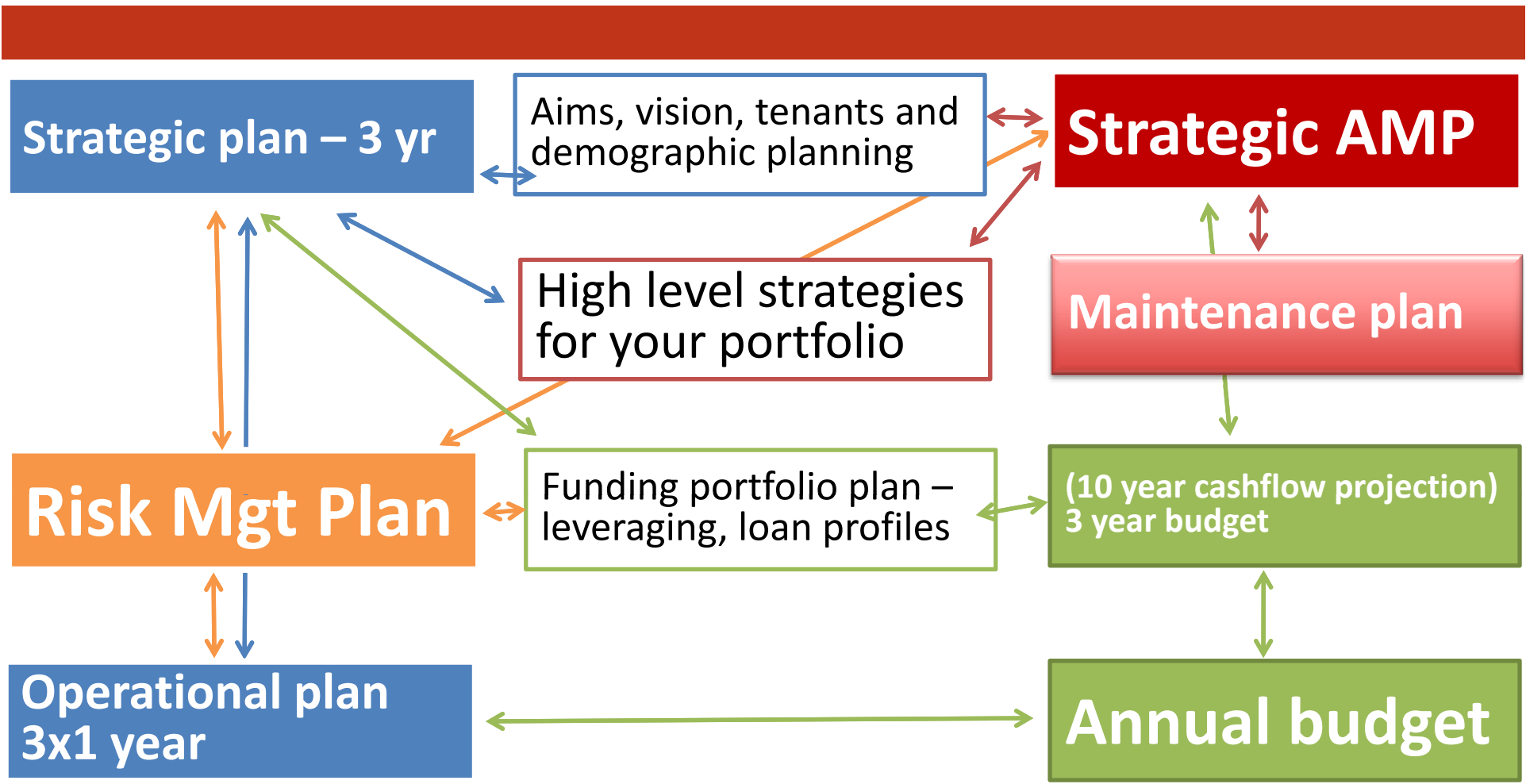


nsw Federation of
Housing Associations inc



LONG TERM STRATEGIC ASSET MANAGEMENT

29th June 2009





**nsw Federation of
Housing Associations Inc**

Regulatory Code Outcome 3.1

Class 1, 2 and 3

- The provider undertakes property management planning, including planning for:
 - maintenance
 - acquisition and disposal (if relevant).
- Strategic asset management planning goals are included in the business plan or related documents.
- Business/operational plan or similar, with goals and strategies relating to asset management.

Class 1 and 2

- Strategic asset management plan.



**nsw Federation of
Housing Associations Inc**

Regulatory Code Outcome 3.1 – asset management planning

Class 1 and 2

- There is a long term strategic asset management plan which covers strategic and operational issues, including:
 - long term portfolio strategy
 - managing the full life cycle of properties, that is:
 - > procurement
 - > maintenance
 - > disposal
 - local demographics and housing needs analysis
 - future demand
 - efficient use of assets
 - policies and procedures covering maintenance planning, including regular condition inspections.



**nsw Federation of
Housing Associations Inc**

NSW – overview of demographics

The population of New South Wales is projected to grow to 9.1 million by 2036, an increase of 33% on the 2006 population of 6.8 million.

Three-fifths of this growth will be driven by natural increase (births minus deaths) and two fifths by net migration.

The State's population will continue to age. The percentage aged 65 and over is expected to rise from 13.5% in 2006 to 21.5% in 2036.

Faster projected population growth in the rest of Australia will reduce New South Wales' share of the national population from 32.9% in 2006 to 30.3% in 2036



NSW Federation of
Housing Associations Inc

NSW – overview of demographics

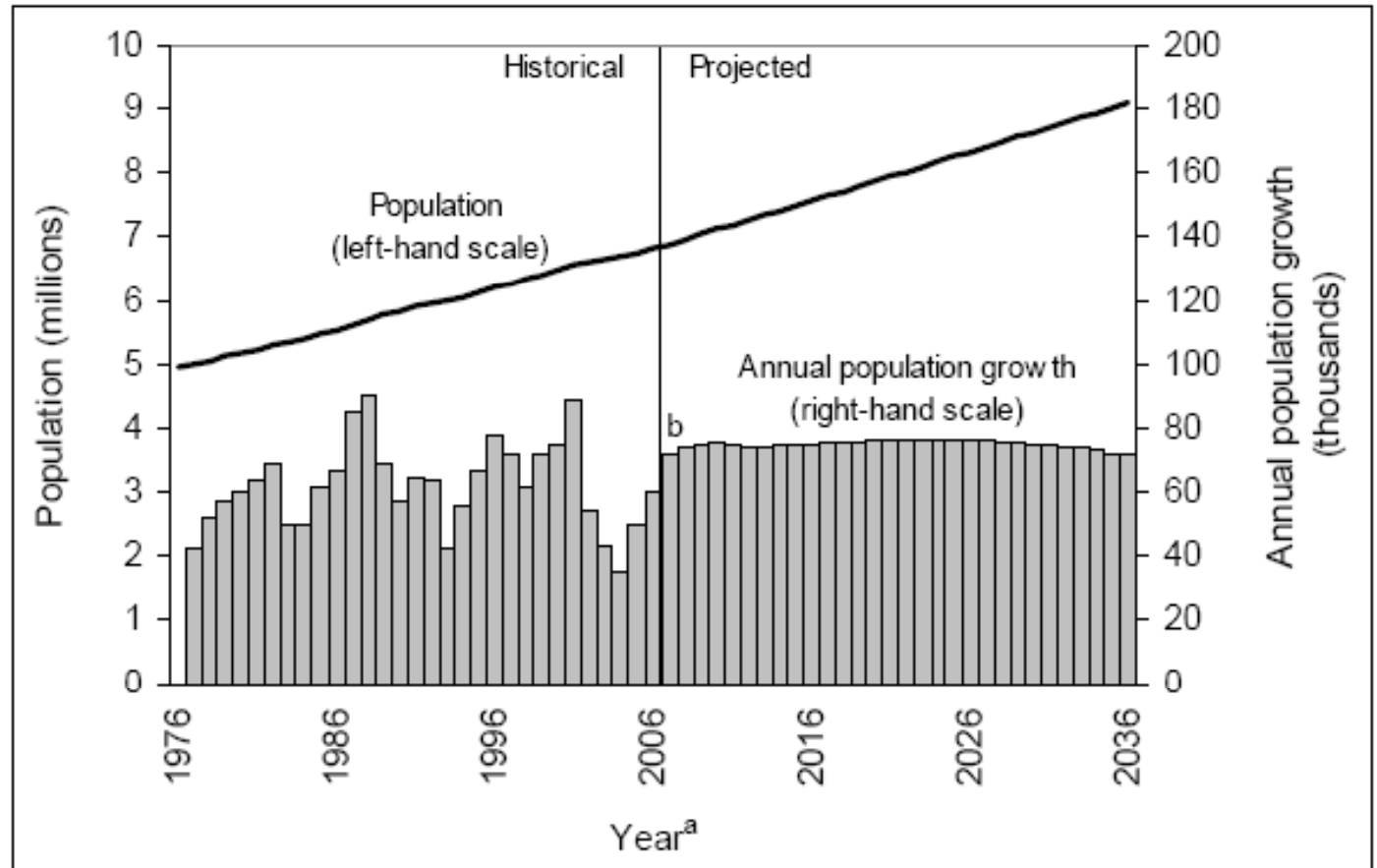


Figure 2.1: The past and projected population of New South Wales, 1976-2036



NSW – overview of demographics

NSW Federation of
Housing Associations Inc

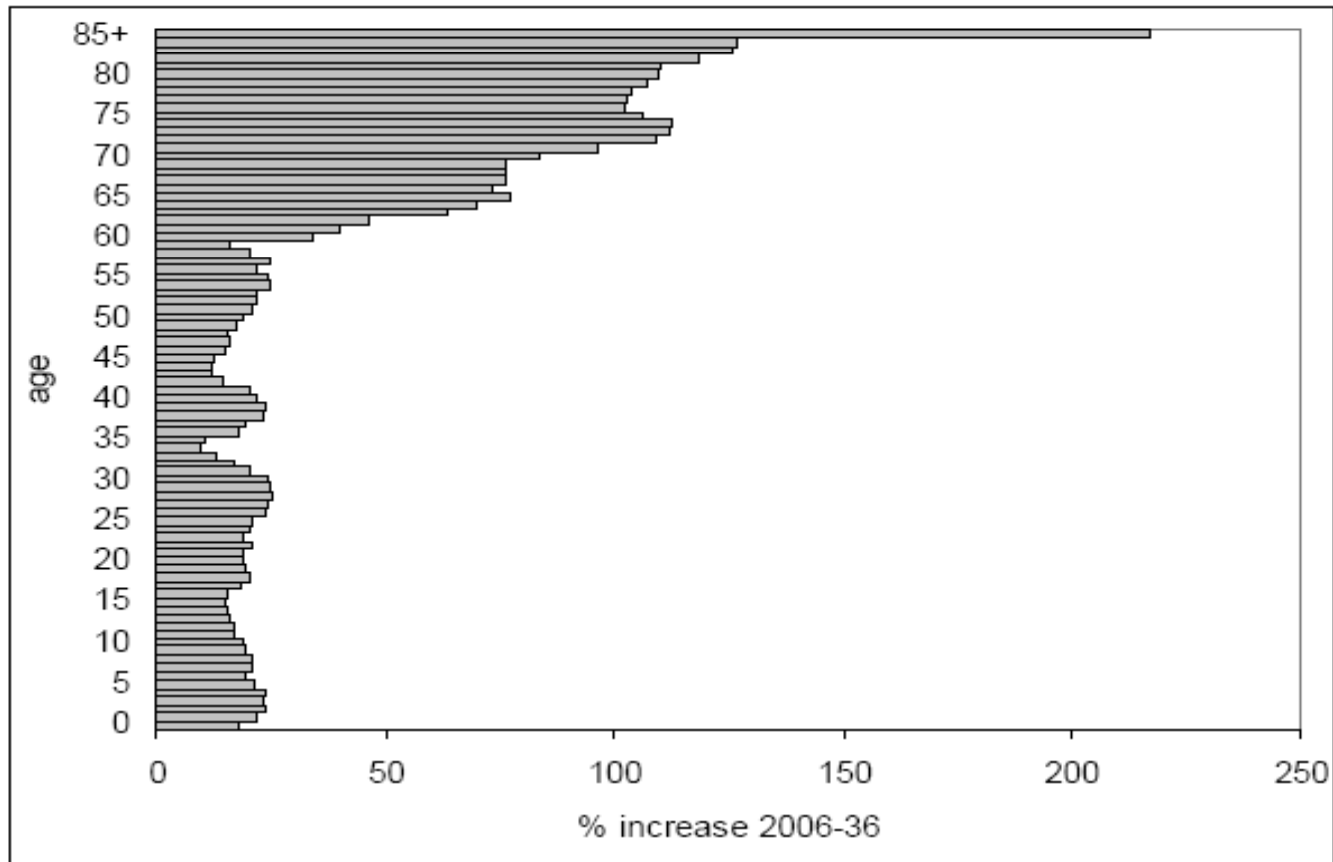


Figure 2.3: Projected percentage increase of the New South Wales population by age, 2006-36



Local demographic data

2006 Census Database - Centre for Affordable Housing - Housing NSW - Windows Internet Explorer

http://www.housing.nsw.gov.au/Centre+For+Affordable+Housing/NSW+Local+Government+Housing+Kit/Local+Government+Housing+Kit+Database/2006+Census+Database.htm

File Edit View Favorites Tools Help

2006 Census Database - Centre for Affordable Housi... Page Tools

New South Wales Government
Housing NSW
Centre for Affordable Housing

Search: Go Advanced Search | Contact us

- About Us
- About Affordable Housing
- Affordable Housing in NSW
- Financing Affordable Housing
- Developing Affordable Housing
- Managing Affordable Housing
- Affordable Home Purchase

You are here: [Home](#) >> [NSW Local Government Housing Kit](#) >> [Local Government Housing Kit Database](#) >> 2006 Census Database

- Home
- NSW Local Government Housing Kit
- Statutory Framework for Housing >
- Why Have a Local Government Strategy >
- Developing your own Housing Strategy >
- Implementing and Monitoring your Strategy >
- Glossary References and Additional Resources
- NSW Statutory Planning Framework for Housing Provision
- Addressing Affordable Housing >
- Planning Mechanisms for Affordable Housing >
- Local Government Housing Contacts
- Local Government Housing Kit Database** ▾
 - Overview
 - 2001 Census Database
 - 2006 Census Database

Welcome to the 2006 Housing Kit Database

This database is a supplement to the Local Government Housing Kit. The section called [Undertaking a Housing Market Analysis](#) is a key companion for this site.

Getting Started- Steps to generating a data table

In order to generate data tables you need to follow three simple steps:

- Select the LGA for which you want information
- Select some regions to compare your LGA to - these can be other SLAS, Statistical Divisions or Subdivisions - you get to pick from a list
- Select the table you want to generate

Please note that the database is under development and its functionality and design will be refined on the basis of user feedback

Just click the Next Button below and you will be guided through each of the steps

[Next >](#)

[Detailed list of tables and variables](#)

Print A+ A-

Print A+ A-



**nsw Federation of
Housing Associations Inc**

Step 1: Selecting an LGA

- Berrigan
- Blacktown
- Blacktown SSD
- Bland
- Blayney
- Blue Mountains
- Bogan
- Bombala
- Boorowa
- Botany Bay
- Bourke
- Brewarrina
- Broken Hill**
- Burwood
- Byron

Next >>



**nsw Federation of
Housing Associations Inc**

Step 2: Select a Comparison Region

Sydney SD
NSW excluding Sydney SD
Total NSW

'Albury '
'Armidale Dumaresq '
'Ashfield '
'Auburn '
'Ballina '
'Balranald '

Next »

**You can select more than 1 comparison area
(up to 10) by holding down the control key
(or the Apple key if you are using an Apple computer)**



NSW Federation of
Housing Associations Inc

Step 3: Select the appropriate table

- D1 - Population Forecasts
- D2 - Age and Sex
- D3 - Trends in Household Types and Family Types**
- D4 - Occupancy Rate Trends
- E1 - Income and occupation Trends
- E2 - Industry Structure
- E3 - Unemployment and the Labour Force
- S1 - Dwelling Structure
- S2 - Dwelling Tenure
- S3 - Bond Lodgements

Next »



NSW Federation of
Housing Associations Inc

Step 3: Select the appropriate table

- S1 - Dwelling Structure
- S2 - Dwelling Tenure
- S3 - Bond Lodgements
- S4 - Public Housing Stock
- M1 - Rents and Prices
- M2 - Number of Households in Housing Stress
- M3 - Proportion of Rental and Purchase stock that is affordable
- M4 - Historical Median Rent and Median House Price Data
- M5 - Rental Affordability of CRA Recipients

Next »



**nsw Federation of
Housing Associations Inc**

D1-Population trends

Area	NSW Total Population 2001	NSW Total Population 2006	NSW Forecast Population 2011	NSW Forecast Population 2016	NSW Forecast Population 2021	NSW Forecast Population 2026	NSW Forecast Population 2031
Broken Hill	20,363	19,356	18,983	18,229	17,685	17,259	16,857
Newcastle	137,307	141,868	151,335	154,615	158,038	161,692	165,426
Upper Hunter Shire	13,069	12,896	13,245	13,103	12,974	12,830	12,647
New South Wales	6,371,745	6,585,732	7,145,169	7,437,260	7,725,218	8,002,500	8,259,177

Source: ABS Census population & TDPC, Dept of Planning (2005 Release Version 1)

Note: Time Series Profile TD1

Date Generated: 26 June 09